

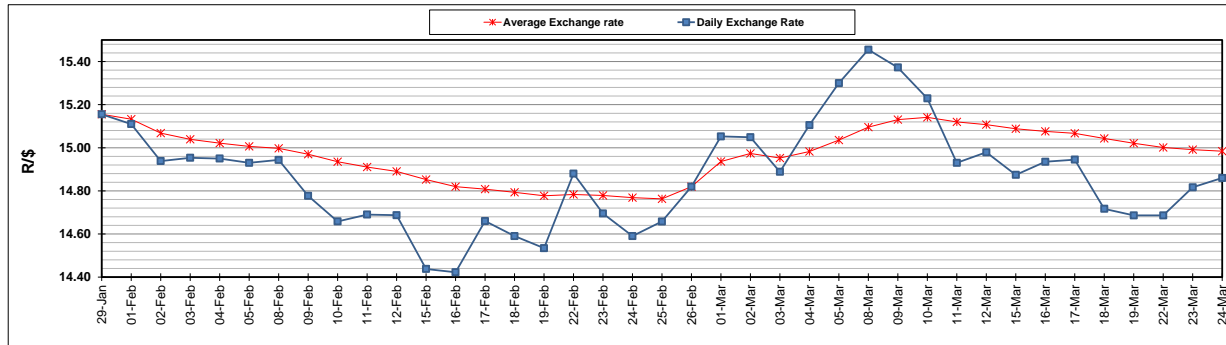
	PETROL 95 ULP	PETROL 93 ULP & LRP	DIESEL 0.05%	DIESEL 0.005%	ILL. PAR.
GAUTENG PUMP PRICE (SA c/l) AS FROM 03/03/2021	1,632.000	1,615.000	-	-	-
WHOLESALE PRICE (SA c/l) AS FROM 03/03/2021	-	-	1,412.420	1,416.820	845.688
SINGLE NATIONAL MAXIMUM RETAIL PRICE	-	-	-	-	1,071.000
BASIC FUEL PRICE - 24/03/2021 (SA c/l)	702.595	687.332	644.548	647.168	623.986
PRESS RELEASE CONTRIBUTION TO BFP 03/03/2021 - 24/03/2021 (SA c/l)	665.170	658.170	653.630	658.030	633.128
UNIT OVER/(UNDER) RECOVERY - 24/03/2021 (SA c/l)	(37.425)	(29.162)	9.082	10.862	9.142
AVERAGE BASIC FUEL PRICE 26/02/2021 - 24/03/2021	731.326	719.891	690.715	693.447	668.356
AVERAGE UNIT OVER/(UNDER) RECOVERY 26/02/2021 - 24/03/2021	(76.419)	(71.984)	(45.611)	(44.259)	(42.649)

ANALYSIS MOVEMENT OF AVERAGE OVER/(UNDER) RECOVERY

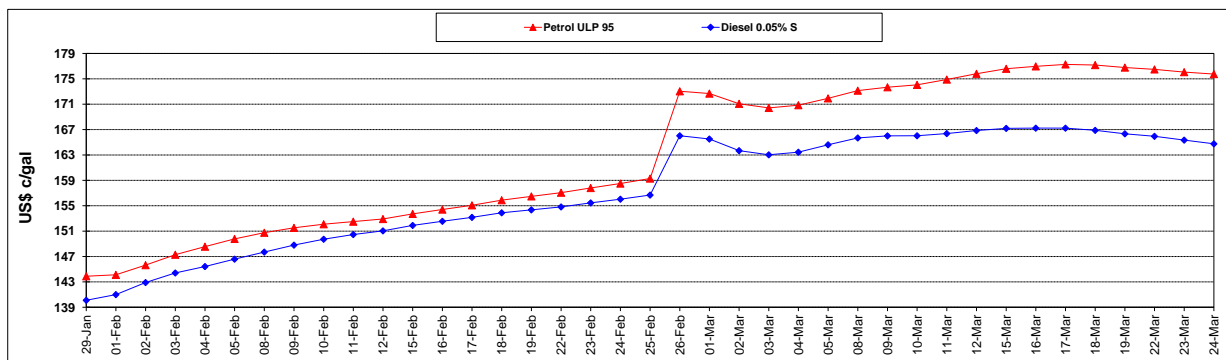
	PETROL 95	PETROL 93	DIESEL 0.05%	DIESEL 0.005%	ILL. PAR.
- MOVEMENT IN INTERNATIONAL PRODUCT PRICES	(65.628)	(61.362)	(35.419)	(34.027)	(32.787)
- MOVEMENT IN EXCHANGE RATE	(10.791)	(10.622)	(10.192)	(10.232)	(9.862)
AVERAGE UNIT OVER/(UNDER) RECOVERY 26/02/2021 - 24/03/2021	(76.419)	(71.984)	(45.611)	(44.259)	(42.649)

R/\$ EXCHANGE RATE - (R/\$14.8600 - 24/03/2021)

EXCHANGE RATE USED IN BASIC FUEL PRICE



INTERNATIONAL PRODUCT PRICES OF BASKET USED IN BASIC FUEL PRICE



BASIC FUEL PRICE IN SA CENTS PER LITRE

